

DIFFUSE



**RELIABLE HDPE
FITTINGS FOR
LASTING
PERFORMANCE**

Company Introduction

About Us

We are a professionally managed HDPE manufacturing company committed to delivering high quality, reliable, and cost effective polyethylene piping solutions for a wide range of industries. With a strong focus on innovation, quality control, and customer satisfaction, we have established ourselves as a trusted name in the HDPE sector.

Backed by industry experience, modern manufacturing practices, and a skilled technical team, our company continuously strives to meet international standards and evolving market requirements. We believe in building long term partnerships by offering products that perform consistently in demanding applications.

Our Products

Our core product range includes high quality HDPE pipes, fittings, and related accessories designed for durability, flexibility, and long service life. Our products are widely used in:

- ▶ Water supply and distribution systems
- ▶ Sewerage and drainage networks
- ▶ Gas pipeline systems
- ▶ Industrial fluid transportation
- ▶ Irrigation and agricultural applications

Infrastructure and utility projects

All products are manufactured using premium grade raw materials and advanced production technology to ensure superior performance, pressure resistance, and environmental safety.

Manufacturing & Quality Assurance

Our manufacturing facility is equipped with modern machinery and advanced testing equipment to maintain strict quality control at every stage of production. From raw material inspection to final product testing, each process is monitored to ensure compliance with relevant national and international standards.

We follow a systematic quality assurance process that includes dimensional checks, pressure testing, material verification, and visual inspections. This commitment to quality ensures consistent product reliability and customer confidence.

Our Strengths

- Experienced technical and production team
- Consistent product quality and reliability
- Competitive pricing with value-driven solutions
- Timely delivery and dependable supply chain
- Strong after-sales and technical support
- Commitment to Sustainability

We recognize our responsibility toward environmental protection and sustainable development. HDPE products are known for their long life cycle, recyclability, and reduced environmental impact. Our manufacturing practices are aligned with responsible resource usage and waste reduction, supporting sustainable infrastructure development.

Vision & Mission

Our Vision To become a leading HDPE manufacturing company by delivering innovative, high quality products and building long term relationships based on trust and performance.

Our Mission To provide reliable HDPE solutions that meet customer needs, adhere to global quality standards, and contribute to efficient and sustainable infrastructure development.

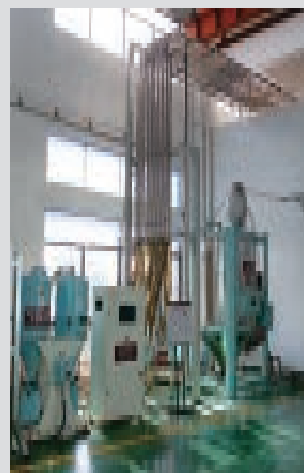
Conclusion

With a strong foundation in quality, technology, and customer focus, our company is well positioned to support projects of all scales. We look forward to partnering with clients, consultants, and contractors to deliver dependable HDPE solutions that add lasting value.





Workshop Automation Equipment



Automatic Feeding System



Fittings Injection Area



Robot Production Line for Hot Melt Pipe



Automated Production Line for Hot Melt Pipe



Automated Production Line for Electric Melt Pipe



Robot Production Line for Electric Melt Pipe



Automated Welding Unit for PE Ball Valve



Automatic production line



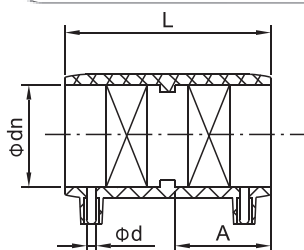
Automatic Production Unit for Hot Melt Pipe



Automatic production line



Electrofusion Coupler

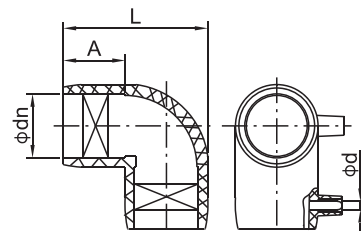


(Specifications) ϕ dn	L	A	ϕ d	(Item Number)
20	85	40	4.7	XDI-20
25	90	43	4.7	XDI-25
32	90	43	4.7	XDI-32
40	97	47	4.7	XDI-40
50	105	50	4.7	XDI-50
63	112	54	4.7	XDI-63
75	134	64	4.7	XDI-75
90	130	63	4.7	XDI-90
110	149	73	4.7	XDI-110
125	169	83	4.7	XDI-125
140	170	83	4.7	XDI-140
160	180	88	4.7	XDI-160
180	210	103	4.7	XDI-180
200	208	100	4.7	XDI-200
225	219	107	4.7	XDI-225
250	219	107	4.7	XDI-250
280	226	109	4.7	XDI-280
315	228	112	4.7	XDI-315
355	267	130	4.7	XDI-355
400	314	152	4.7	XDI-400
450	328	160	4.7	XDI-450
500	370	180	4.7	XDI-500
560	405	202	4.7	XDI-560
630	425	212	4.7	XDI-630

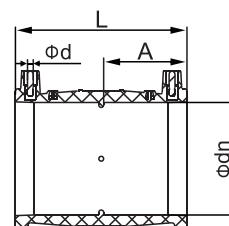
(Specifications) ϕ dn	L	A	ϕ d	(Item Number)
250	216	106	4.7	XDI-20
315	223	109	4.7	XDI-25



Electrofusion Elbow 90°



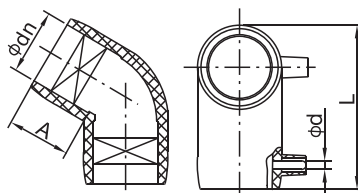
(Specifications) ϕ dnX90°	L	A	ϕ d	(Item Number)
25 × 90°	86	48	4.7	XDL-25
32 × 90°	94	43	4.7	XDL-32
40 × 90°	95	48	4.7	XDL-40
50 × 90°	112	52	4.7	XDL-50
63 × 90°	130	54	4.7	XDL-63
75 × 90°	152	64	4.7	XDL-75
90 × 90°	173	64	4.7	XDL-90
110 × 90°	200	73	4.7	XDL-110
125 × 90°	225	79	4.7	XDL-125
140 × 90°	238	79	4.7	XDL-125
160 × 90°	265	81	4.7	XDL-160
180 × 90°	295	85	4.7	XDL-180
200 × 90°	330	100	4.7	XDL-200
225 × 90°	355	104	4.7	XDL-225
250 × 90°	395	114	4.7	XDL-250
315 × 90°	482	128	4.7	XDL-315
355 × 90°	523	127	4.7	XDL-355
400 × 90°	590	140	4.7	XDL-400



Electrofusion Coupler

(Specifications) ϕ dn	L	A	ϕ d	(Item Number)
90	138	66	4.7	XDI-20
110	143	70	4.7	XDI-25
160	172	84	4.7	XDI-32
200	194	95	4.7	XDI-40

Electrofusion Fitting Series

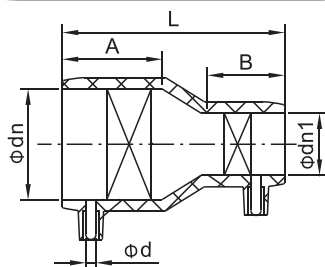


Electrofusion Elbow 45°

(Specifications) ϕ dn	L	A	ϕ d	(Item Number)
50×45°	135	50	4.7	XDVL-50
63×45°	180	63	4.7	XDVL-63
75×45°	167	62	4.7	XDVL-63
90×45°	230	84	4.7	XDVL-90
110×45°	285	90	4.7	XDVL-110
125×45°	245	80	4.7	XDVL-110
140×45°	270	85	4.7	XDVL-110
160×45°	285	85	4.7	XDVL-160
180×45°	308	90	4.7	XDVL-180
200×45°	330	100	4.7	XDVL-200
225×45°	350	104	4.7	XDVL-200
250×45°	420	114	4.7	XDVL-250
315×45°	470	130	4.7	XDVL-315
355×45°	495	128	4.7	XDVL-315
400×45°	580	140	4.7	XDVL-400

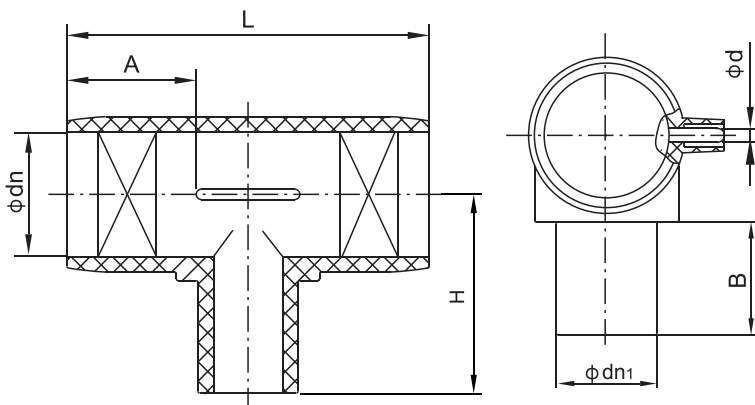


Electrofusion Reducer



(Specifications) ϕ dnX ϕ dn ₁	L	A	B	ϕ d	(Item Number)
355×250	261	109	103	4.7	XDS-355/250
355×315	261	130	115	4.7	XDS-355/315
400×250	265	117	114	4.7	XDS-400/250
400×315	263	113	112	4.7	XDS-400/315

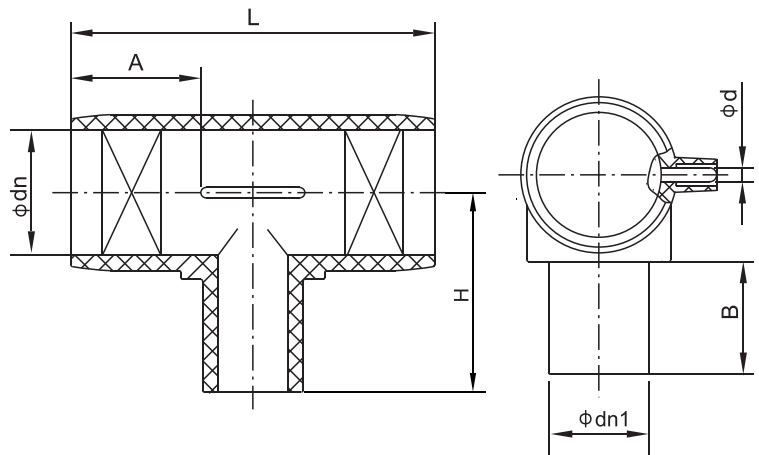
(Specifications) ϕ dnX ϕ dn ₁	L	A	B	ϕ d	(Item Number)
25×20	92	46	37	4.7	XDS-25/20
32×20	94	43	44	4.7	XDS-32/20
32×25	94	40	43	4.7	XDS-32/25
40×25	100	50	40	4.7	XDS-40/25
40×32	102	50	44	4.7	XDS-40/32
50×25	112	55	41	4.7	XDS-50/25
50×32	112	55	42	4.7	XDS-50/32
50×40	115	52	51	4.7	XDS-50/40
63×25	121	59	41	4.7	XDS-63/25
63×32	122	62	41	4.7	XDS-63/32
63×40	120	60	45	4.7	XDS-63/40
63×50	122	58	56	4.7	XDS-63/50
75×40	129	79	50	4.7	XDS-75/40
75×50	129	65	51	4.7	XDS-75/50
75×63	129	65	52	4.7	XDS-75/63
90×40	170	70	68	4.7	XDS-90/40
90×50	140	66	52	4.7	XDS-90/50
90×63	140	68	56	4.7	XDS-90/63
90×75	145	69	63	4.7	XDS-90/75
110×50	162	79	55	4.7	XDS-110/50
110×63	163	79	56	4.7	XDS-110/63
110×75	155	73	63	4.7	XDS-110/75
110×90	156	77	65	4.7	XDS-110/90
125×63	160	80	61	4.7	XDS-125/63
125×90	168	83	67	4.7	XDS-125/90
125×110	168	88	69	4.7	XDS-125/110
140×90	182	114	67	4.7	XDS-140/90
140×110	182	83	77	4.7	XDS-140/110
140×125	182	102	75	4.7	XDS-140/125
160×90	196	93	75	4.7	XDS-160/90
160×110	197	94	76	4.7	XDS-160/110
160×125	193	94	76	4.7	XDS-160/125
200×90	204	90	76	4.7	XDS-200/90
200×110	207	90	80	4.7	XDS-200/110
200×160	210	95	90	4.7	XDS-200/160
225×110	228	102	76	4.7	XDS-225/110
225×160	230	103	85	4.7	XDS-225/160
225×200	230	105	94	4.7	XDS-225/200
250×110	234	108	88	4.7	XDS-250/110
250×160	230	110	90	4.7	XDS-250/160
250×200	230	105	99	4.7	XDS-250/200
250×225	229	111	89	4.7	XDS-250/225
315×160	242	104	92	4.7	XDS-315/160
315×200	240	103	102	4.7	XDS-315/200
315×225	246	106	104	4.7	XDS-315/225
315×250	242	105	112	4.7	XDS-315/250
355×160	260	109	88	4.7	XDS-355/160
355×200	261	109	98	4.7	XDS-355/200



Electrofusion Reducing Tee

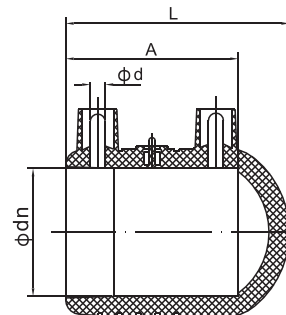
(Specifications) φ dnX φ dn1X φ dn	L	A	B	H	φ d	(Item Number)
25×20×25	107	42	48	74	4.7	XDST-25/20
32×20×32	119	46	49	80	4.7	XDST-32/20
32×25×32	119	46	49	80	4.7	XDST-32/25
40×20×40	125	46	57	91	4.7	XDST-40/20
40×25×40	125	46	58	90	4.7	XDST-40/25
40×32×40	125	46	58	90	4.7	XDST-40/32
50×25×50	144	53	53	95	4.7	XDST-50/25
50×32×50	144	53	57	95	4.7	XDST-50/32
50×40×50	144	53	57	100	4.7	XDST-50/40
63×25×63	129	52	55	100	4.7	XDST-63/25
63×32×63	135	52	55	105	4.7	XDST-63/32
63×40×63	142	51	55	105	4.7	XDST-63/40
63×50×63	165	58	60	110	4.7	XDST-63/50
75×32×75	197	68	60	120	4.7	XDST-75/32
75×40×75	196	68	64	117	4.7	XDST-75/40
75×50×75	196	68	65	120	4.7	XDST-75/50
75×63×75	195	68	72	125	4.7	XDST-75/63
90×32×90	211	70	61	127	4.7	XDST-90/32
90×40×90	211	70	61	127	4.7	XDST-90/40
90×50×90	211	70	62	127	4.7	XDST-90/50
90×63×90	211	70	65	130	4.7	XDST-90/63
90×75×90	211	70	72	140	4.7	XDST-90/75
110×32×110	241	77	63	141	4.7	XDST-110/32
110×40×110	241	77	63	141	4.7	XDST-110/40
110×50×110	242	77	63	140	4.7	XDST-110/50
110×63×110	242	77	64	142	4.7	XDST-110/63
110×75×110	242	77	72	158	4.7	XDST-110/75
110×90×110	242	77	80	160	4.7	XDST-110/90
125×90×125	255	80	84	165	4.7	XDST-125/90
125×110×125	255	80	85	165	4.7	XDST-125/110

(Specifications) φ dnX φ dn1X φ dn	L	A	B	H	φ d	(Item Number)
140×90×140	280	84	79	180	4.7	XDST-140/90
140×110×140	280	84	84	180	4.7	XDST-140/110
140×125×140	280	84	87	180	4.7	XDST-140/125
160×40×160	308	91	50	161	4.7	XDST-160/40
160×63×160	306	90	65	174	4.7	XDST-160/63
160×75×160	305	90	70	185	4.7	XDST-160/75
160×90×160	306	90	80	188	4.7	XDST-160/90
160×110×160	306	90	84	190	4.7	XDST-160/110
160×125×160	306	90	84	195	4.7	XDST-160/125
200×63×200	360	98	63	200	4.7	XDST-200/63
200×90×200	360	98	79	200	4.7	XDST-200/90
200×110×200	360	98	82	210	4.7	XDST-200/110
200×160×200	360	98	98	220	4.7	XDST-200/160
225×110×225	398	104	85	235	4.7	XDST-225/110
225×160×225	398	104	100	235	4.7	XDST-225/160
250×90×250	405	100	79	238	4.7	XDST-250/90
250×110×250	405	100	95	258	4.7	XDST-250/110
250×160×250	405	100	100	272	4.7	XDST-250/160
250×200×250	405	98	112	282	4.7	XDST-250/200
315×110×315	525	134	82	293	4.7	XDST-315/110
315×160×315	525	134	95	296	4.7	XDST-315/160
315×200×315	525	134	90	308	4.7	XDST-315/200
315×250×315	525	134	105	312	4.7	XDST-315/250
355×160×355	564	128	83	266	4.7	XDST-355/160
355×200×355	564	128	95	328	4.7	XDST-355/200
355×250×355	564	128	129	360	4.7	XDST-355/250
400×110×400	600	127	98	355	4.7	XDST-400/110
400×160×400	600	127	99	355	4.7	XDST-400/160
400×200×400	600	127	119	360	4.7	XDST-400/200
400×250×400	600	127	108	370	4.7	XDST-400/250
400×315×400	600	127	124	390	4.7	XDST-400/315



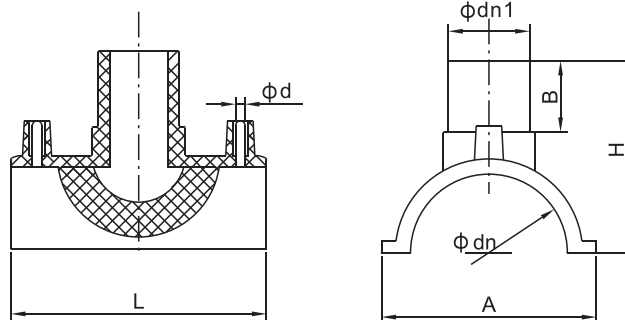
Electrofusion Equal Tee

(Specifications) $\phi dn \times \phi dn_1 \times \phi dn$	L	A	B	H	ϕd	(Item Number)
20×20×20	100	40	44	63	4.7	XDT-20
25×25×25	107	42	50	73	4.7	XDT-25
32×32×32	120	45	54	80	4.7	XDT-32
40×40×40	126	46	59	91	4.7	XDT-40
50×50×50	144	53	59	98	4.7	XDT-50
63×63×63	165	58	63	108	4.7	XDT-63
75×75×75	197	68	74	125	4.7	XDT-75
90×90×90	212	70	79	142	4.7	XDT-90
110×110×110	242	77	83	160	4.7	XDT110
125×125×125	255	80	88	174	4.7	XDT-125
140×140×140	280	84	96	190	4.7	XDT-140
160×160×160	309	90	95	207	4.7	XDT-160
180×180×180	340	97	105	230	4.7	XDT-180
200×200×200	360	100	107	238	4.7	XDT-200
225×225×225	398	103	116	262	4.7	XDT-225
250×250×250	407	101	121	290	4.7	XDT-250
315×315×315	526	134	121	322	4.7	XDT-315
355×355×355	560	127	165	350	4.7	XDT-355
400×400×400	605	123	119	390	4.7	XDT-400



Electrofusion End Cap

(Specifications) φ dnX90°	L	A	φ d	(Item Number)
32	60	52	4.7	XDM-32
40	70	52	4.7	XDM-40
50	75	58	4.7	XDM-50
63	90	58	4.7	XDM-63
90	95	67	4.7	XDM-90
110	105	71	4.7	XDM-110
160	135	96	4.7	XDM-160
200	155	104	4.7	XDM-200



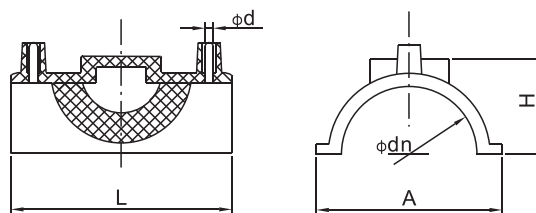
Electrofusion Branch Saddle

(Specifications) φ dnX φ dn1	L	A	B	H	φ d	(Item Number)
63×32	110	100	79	124	4.7	XDFI-63/32
90×63	145	160	80	145	4.7	XDFI-90/63
110×32	145	160	80	145	4.7	XDFI-110/32
110×63	145	160	80	145	4.7	XDFI-110/63
160×63	190	238	100	185	4.7	XDFI-160/63
160×90	190	238	100	180	4.7	XDFI-160/90
200×63	190	250	110	185	4.7	XDFI-200/63
200×90	190	250	115	190	4.7	XDFI-200/90
225×32	190	248	66	145	4.7	XDFI-225/32
225×63	190	250	108	187	4.7	XDFI-225/63
250×63	190	300	115	195	4.7	XDFI-250/63
250×90	190	300	115	195	4.7	XDFI-250/90
315×63	190	303	115	190	4.7	XDFI-315/63
315×90	190	303	115	190	4.7	XDFI-315/90

Electrofusion Fitting Series



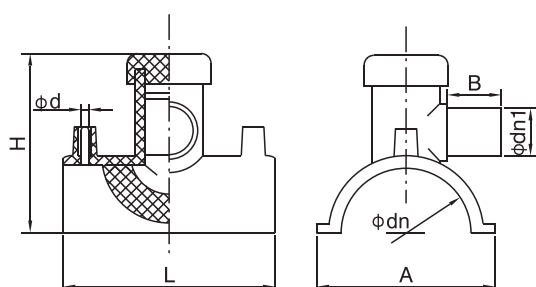
Electrofusion Repair Saddle



(Specifications) ϕdn	L	A	H	ϕd	(Item Number)
90	145	160	68	4.7	XDU-90
110	145	160	68	4.7	XDU-110
160	190	230	85	4.7	XDU-160
200	190	249	85	4.7	XDU-200
250	190	300	77	4.7	XDU-250
315	192	305	77	4.7	XDU-315



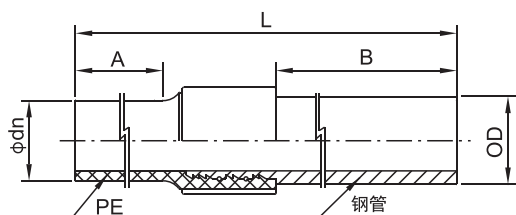
Electrofusion Tapping Saddle



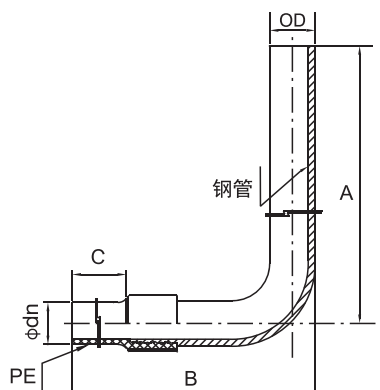
(Specifications) $\phi dn \times \phi dn1$	L	A	B	H	ϕd	(Item Number)
63 × 20	115	100	52	122	4.7	XDF-63/20
63 × 25	115	100	52	122	4.7	XDF-63/25
63 × 32	115	100	65	122	4.7	XDF-63/32
75 × 20	115	100	52	122	4.7	XDF-75/20
75 × 25	115	100	52	122	4.7	XDF-75/25
75 × 32	115	100	65	122	4.7	XDF-75/32
90 × 20	130	143	56	145	4.7	XDF-90/20
90 × 25	130	143	56	145	4.7	XDF-90/25
90 × 32	130	143	56	185	4.7	XDF-90/32
90 × 63	140	140	85	185	4.7	XDF-90/63
110 × 20	130	155	55	145	4.7	XDF-110/20
110 × 25	130	155	55	145	4.7	XDF-110/25
110 × 32	130	155	60	150	4.7	XDF-110/32
110 × 40	145	160	63	180	4.7	XDF-110/40
110 × 50	145	160	61	177	4.7	XDF-110/50
110 × 63	140	155	73	200	4.7	XDF-110/63
125 × 25	130	155	55	145	4.7	XDF-125/25
125 × 63	140	155	73	200	4.7	XDF-125/63
160 × 25	142	199	66	169	4.7	XDF-160/25
160 × 32	142	197	72	169	4.7	XDF-160/32
160 × 50	190	240	85	235	4.7	XDF-160/50
160 × 63	190	240	80	235	4.7	XDF-160/63
160 × 90	190	240	125	235	4.7	XDF-160/90
180 × 25	142	199	66	169	4.7	XDF-180/25
200 × 63	190	250	85	235	4.7	XDF-200/63
200 × 90	190	250	120	235	4.7	XDF-200/90
225 × 32	193	253	65		4.7	XDF-225/32
225 × 63	190	250	85	235	4.7	XDF-225/63
225 × 90	190	250	120	235	4.7	XDF-225/90
250 × 63	190	305	91	250	4.7	XDF-250/63
250 × 90	190	305	118	250	4.7	XDF-250/90
280 × 63	190	305	91	250	4.7	XDF-280/63
280 × 90	190	305	118	250	4.7	XDF-280/90
315 × 63	190	315	85	250	4.7	XDF-315/63
315 × 90	190	315	155	250	4.7	XDF-315/90



PE/Steel Transition Pipe



PE Steel Transition Pipe Elbow



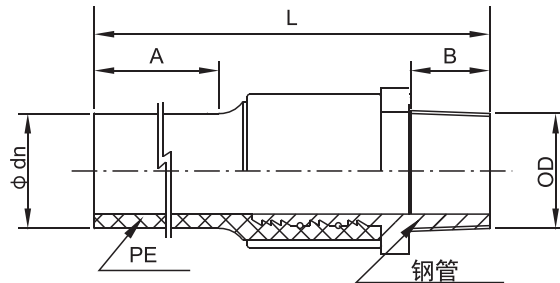
(Specifications)	PE φ dn	OD	L	A	B			(Item Number)
20×22	20	22	380	66	250	1/2"	15	XDGGS-20/22
25×22	25	22	410	95	250	1/2"	15	XDGGS-25/22
25×27	25	27	410	95	250	3/4"	20	XDGGS-25/27
32×22	32	22	420	111	250	1/2"	15	XDGGS-32/22
32×27	32	27	420	111	250	3/4"	20	XDGGS-32/27
32×34	32	34	430	112	250	1"	25	XDGGS-32/34
40×34	40	34	430	112	250	1"	25	XDGGS-40/34
40×38	40	38	430	112	250	-	30	XDGGS-40/38
40×42	40	42	430	112	250	1-1/4"	32	XDGGS-40/42
40×48	40	48	430	112	250	1-1/2"	40	XDGGS-40/48
50×34	50	34	435	118	250	1"	25	XDGGS-50/34
50×42	50	42	435	118	250	1-1/4"	30	XDGGS-50/42
50×45	50	45	435	118	250	-	-	XDGGS-50/45
50×48	50	48	430	118	250	1-1/2"	40	XDGGS-50/48
63×34	63	34	440	126	250	1"	25	XDGGS-63/34
63×42	63	42	440	126	250	1-1/4"	32	XDGGS-63/42
63×48	63	48	440	126	250	1-1/2"	40	XDGGS-63/48
63×57	63	57	440	126	250	2"	50	XDGGS-63/57
63×60	63	60	440	126	250	2"	50	XDGGS-63/60
75×76	75	76	440	100	250	2-1/2"	65	XDGGS-75/76
90×76	90	76	500	160	250	2-1/2"	65	XDGGS-90/76
90×89	90	89	460	140	250	3"	80	XDGGS-90/89
110×89	110	89	440	120	250	3"	80	XDGGS-110/89
110×108	110	108	460	140	250	4"	100	XDGGS-110/108
160×159	160	159	520	150	250	6"	150	XDGGS-160/159
200×219	200	219	620	150	350	8"	200	XDGGS-200/219
250×273	250	273	680	190	350	10"	250	XDGGS-250/273
315×325	315	325	680	190	350	12"	300	XDGGS-315/325
355×375	355	377	700	200	350	14"	350	XDGGS-355/375
400×406	400	406	730	230	350	16"	400	XDGGS-400/406
400×426	400	426	730	230	350	16"	400	XDGGS-400/426

(Specifications)	PE φ dn	OD	A	B	C			(Item Number)
25×22	25	22	1000	310	95	1/2"	15	XDGKS-25/22
25×27	25	27	1000	340	95	3/4"	20	XDGKS-25/27
32×22	32	22	1000	320	111	1/2"	15	XDGKS-32/22
32×27	32	27	1000	345	111	3/4"	20	XDGKS-32/27
32×34	32	34	1000	375	112	1"	25	XDGKS-32/34
40×32	40	32	1000	375	112	-	25	XDGKS-40/32
40×34	40	34	1000	380	112	1"	25	XDGKS-40/34
40×38	40	38	1000	395	112	-	30	XDGKS-40/38
40×42	40	42	1000	395	112	1-1/4"	32	XDGKS-40/42
40×48	40	48	1000	430	112	1-1/2"	40	XDGKS-40/48
50×34	50	34	1000	400	118	1"	25	XDGKS-50/34
50×42	50	42	1000	400	118	1-1/4"	32	XDGKS-50/42
50×48	50	48	1000	430	118	1-1/2"	40	XDGKS-50/48
63×34	63	34	1000	410	126	1"	25	XDGKS-63/34
63×42	63	42	1000	410	126	1-1/4"	32	XDGKS-63/42
63×48	63	48	1000	440	126	1-1/2"	40	XDGKS-63/48
63×57	63	57	1000	465	126	2"	50	XDGKS-63/57
63×60	63	60	1000	490	126	2"	53	XDGKS-63/60

PE/Steel Transition Fitting Series



PE/Steel Transition Threaded



(Specifications)		PE φ dn	OD	L	A	B		(Item Number)
32×1"	32	32	11	184	91	26	1"	XDKS-32/25
40×1 1/4"	40	40		210	117	25	1 1/4"	XDKS-40/32
50×1 1/2"	50	50		214	118	25	1 1/2"	XDKS-50/40
63×2"	63	63		222	127	25	2"	XDKS-63/50

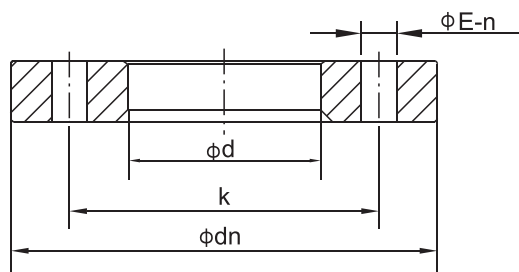


PE/Steel Transition Threaded

(Specifications)		(Item Number)
25×3/4"	25	XDSK-25/3/4"
32×3/4"	32	XDSK-32/3/4"
32×1"	32	XDSK-32/1"
40×1"	40	XDSK-40/1"
40×1 1/4"	40	XDSK-40/1 1/4"
50×1 1/2"	50	XDSK-50/1 1/2"
63×1 1/2"	63	XDSK-63/1 1/2"
63×1"	63	XDSK-63/1"



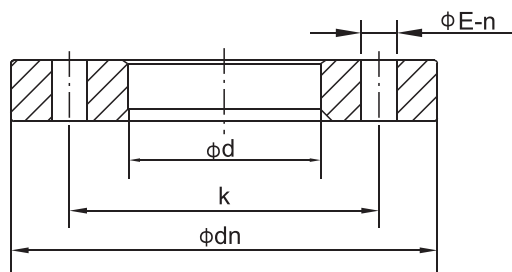
Nylon Coated Flange Plate (PN1.0MPa)



PE	(Specifications)	$\phi d n$	ϕd	K	ϕE	n		(Item Number)
20	15	95	27	65	14	4	M12	XDO10-20
25	20	105	32	75	14	4		XDO10-25
32	25	115	39	85	14	4		XDO10-32
40	32	135	47	100	18	4		XDO10-40
50	40	145	57	110	18	4	M16	XDO10-50
63	50	160	70	125	18	4		XDO10-63
75	65	180	81	145	18	4		XDO10-75
90	80	195	97	160	18	8		XDO10-90
110	100	215	116	180	18	8		XDO10-110
125	100	215	135	180	18	8		XDO10-125
140	125	245	150	210	18	8		XDO10-140
160	150	280	170	240	22	8	M20	XDO10-160
180	150	280	190	240	22	8		XDO10-180
200	200	335	222	295	22	8		XDO10-200
225	200	335	235	295	22	8		XDO10-225
250	250	390	276	350	22	12		XDO10-250
280	250	390	292	350	22	12		XDO10-280
315	300	440	328	400	22	12		XDO10-315
355	350	500	380	460	22	16	M24	XDO10-355
400	400	565	430	515	26	16		XDO10-400
450	450	615	484	565	26	20		XDO10-450
500	500	670	534	620	26	20	M27	XDO10-500
560	600	780	575	725	30	20		XDO10-560
630	600	780	650	725	30	20		XDO10-630
710	700	895	730	840	30	24	M30	XDO10-710
800	800	1010	825	950	33	24		XDO10-800
900	900	1110	930	1050	33	28		XDO10-900
1000	1000	1220	1025	1160	36	28	M33	XDO10-1000
1200	1200	1455	1260	1380	39	32	M36	XDO10-1200



Socket Rigid Flange

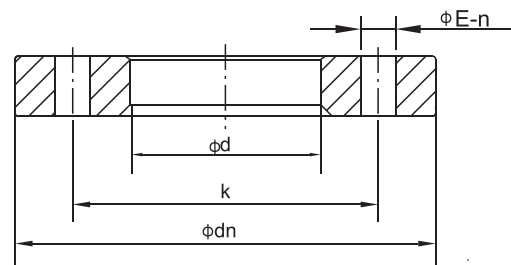
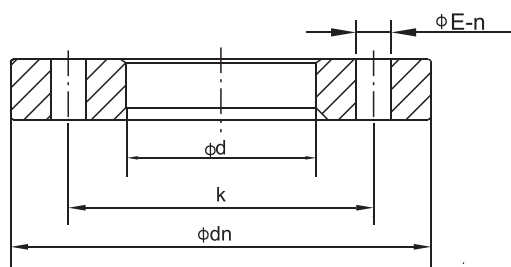


PE	(Specifications)	$\phi d n$	ϕd	K	ϕE	n		(Item Number)
40	32	135	52	100	18	4	M16	XDO10-40C
50	40	145	64	110	18	4		XDO10-50C
63	50	160	78	125	18	4		XDO10-63C
75	65	180	92	145	18	4		XDO10-75C

PE/Steel Transition Fitting Series



Nylon Coated Flange Plate (PN1.6MPa)



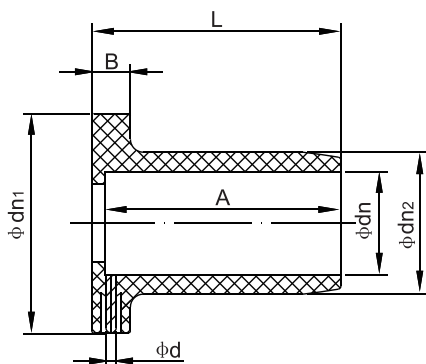
50-110开口18×18cm

PE	(Specifications)	$\phi d n$	ϕd	K	ϕE	n		(Item Number)
20	15	95	27	65	14	4	M12	XDO16-20
25	20	105	32	75	14	4		XDO16-25
32	25	115	39	85	14	4		XDO16-32
40	32	135	47	100	18	4	M16	XDO16-40
50	40	145	57	110	18	4		XDO16-50
63	50	160	70	125	18	4		XDO16-63
75	65	180	81	145	18	4		XDO16-75
90	80	195	97	160	18	8		XDO16-90
110	100	215	116	180	18	8		XDO16-110
125	100	215	135	180	18	8		XDO16-125
140	125	245	150	210	18	8	M20	XDO16-140
160	150	280	170	240	22	8		XDO16-160
180	150	280	190	240	22	8		XDO16-180
200	200	335	222	295	22	12	M24	XDO16-200
225	200	335	235	295	22	12		XDO16-225
250	250	400	276	355	26	12		XDO16-250
280	250	400	292	355	26	12	M27	XDO16-280
315	300	450	328	410	26	12		XDO16-315
355	350	510	380	470	26	16		XDO16-355
400	400	570	430	525	30	16	M30	XDO16-400
450	450	630	484	585	30	20		XDO16-450
500	500	705	534	650	33	20		XDO16-500
560	600	830	575	770	36	20	M33	XDO16-560
630	600	830	650	770	36	20		XDO16-630
710	700	900	730	840	36	24		XDO16-710
800	800	1010	824	950	39	24	M36	XDO16-800
900	900	1110	930	1050	39	28		XDO16-900
1000	1000	1220	1025	1170	42	28		XDO16-1000
1200	1200	1455	1260	1390	48	32	M45	XDO16-1200

PE	(Specifications)	$\phi d n$	ϕd	K	ϕE	n		(Item Number)
50	40	145	73	110	18	4	M16	XDO10-50G
63	50	160	86	125	18	4		XDO10-63G
75	65	180	100	145	18	4		XDO10-75G
90	80	195	115	160	18	8		XDO10-90G
110	100	215	138	180	18	8		XDO10-110G
125	100	215	150	180	18	8	M20	XDO10-125G
140	125	245	173	210	18	8		XDO10-140G
160	150	280	193	240	22	8		XDO10-160G
200(10)	200	335	244	295	22	8	M24	XDO16-200G
200(16)	200	335	244	295	22	12		XDO16-200G
225	200	335	265	295	22	12		XDO16-225G
250	250	400	287	355	26	12	M27	XDO16-250G
315	300	450	356	410	26	12		XDO16-315G
355	350	510	405	470	26	12		XDO16-355G
400	400	570	440	525	30	16	M45	XDO16-400G



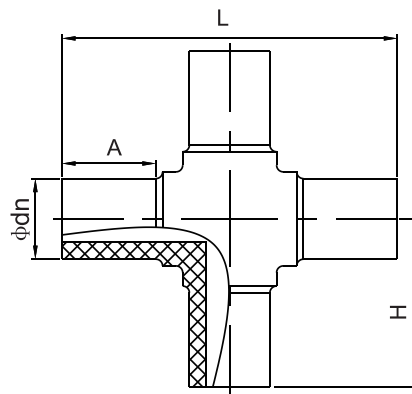
Electrofusion Flange Adapter



(Specifications) ϕ dn	ϕ dn ₁	ϕ dn ₂	L	A	B	ϕ d	(Item Number)
50	90	66	65	61	17	4.7	XDDD-50
63	103	80	76	68	20	4.7	XDDD-63
75	122	95	81	75	20	4.7	XDDD-75
90	142	110	91	82	24	4.7	XDDD-90
110	162	132	100	95	26	4.7	XDDD-110
125	180	150	100	95	25	4.7	XDDD-125
140	195	168	101	95	27	4.7	XDDD-140
160	220	191	117	106	33	4.7	XDDD-160
200 (8孔)	268	239	135	124	35	4.7	XDDD-200
200 (12孔)	292	239	135	124	35	4.7	XDDD-200
225	315	261	134	125	34	4.7	XDDD-225
250	340	279	130	122	32	4.7	XDDD-250
315	390	348	134	127	34	4.7	XDDD-315
355	455	394	158	150	44	4.7	XDDD-355
400	512	431	160	153	36	4.7	XDDD-400

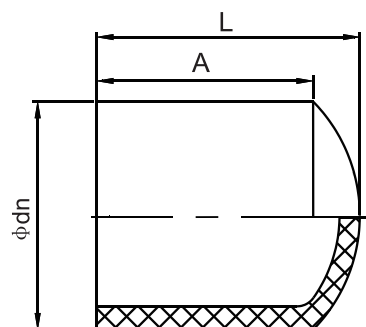
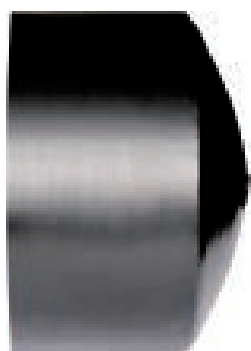


Cross Fitting



SDR11				
(Specifications) ϕ dn	L	A	H	(Item Number)
63	225/230	73/82	102/115	XDRX11-63
90	265	79	132	XDRX11-90
110	290	82	143	XDRX11-110
160	405/425	106/125	200/225	XDRX11-160
200	400/420	88/98	200/210	XDRX11-200

SDR17				
(Specifications) ϕ dn	L	A	H	(Item Number)
250	505	115	252	XDRX17-250
315	610	130	305	XDRX17-315
355	654	132	327	XDRX17-355



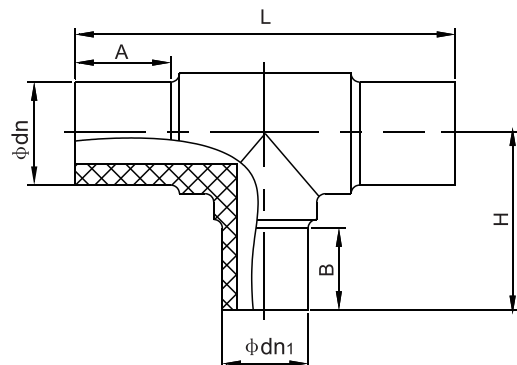
End Cap

SDR11			
(Specifications) ϕ dn	L	A	(Item Number)
20	45	40	XDRM11-20
25	45	40	XDRM11-25
32	51	44	XDRM11-32
40	87	67	XDRM11-40
50	90	67	XDRM11-50
63	85	70	XDRM11-63
75	84	74	XDRM11-75
90	93	80	XDRM11-90
110	98	82	XDRM11-110
125	106	87	XDRM11-125
140	135	105	XDRM11-140
160	128	102	XDRM11-160
180	145	112	XDRM11-180
200	140	112	XDRM11-200
225	146	118	XDRM11-225
250	170	130	XDRM11-250
280	166	140	XDRM11-280
315	190	150	XDRM11-315
400	215	155	XDRM11-400

SDR17			
(Specifications) ϕ dn	L	A	(Item Number)
63	85	70	XDRM17-63
90	93	80	XDRM17-90
110	98	82	XDRM17-110
125	106	87	XDRM17-125
140	135	105	XDRM17-140
160	128	102	XDRM17-160
180	145	112	XDRM17-180
200	140	112	XDRM17-200
225	146	118	XDRM17-225
250	170	130	XDRM17-250
280	166	140	XDRM17-280
315	190	150	XDRM17-315
355	210	155	XDRM17-355
400	215	155	XDRM17-400
500	240	195	XDRM17-500
630	238	190	XDRM17-630



Reducing Tee



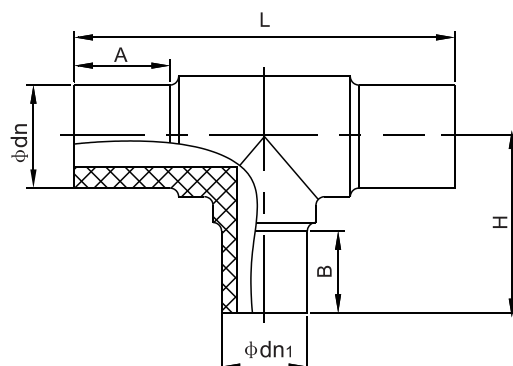
SDR11					
(Specifications) $\phi dn \times \phi dn_1 \times \phi dn_2$	L	A	B	H	(Item Number)
50×32×50	170	55	55	86	XDRST11-50/32
50×40×50	170	55	55	87	XDRST11-50/40
63×25×63	167	63	44	92	XDRST11-63/25
63×32×63	170	63	45	95	XDRST11-63/32
63×40×63	182	63	55	100	XDRST11-63/40
63×50×63	193	63	55	105	XDRST11-63/50
75×32×75	230	70	44	95	XDRST11-75/32
75×40×75	230	70	49	105	XDRST11-75/40
75×50×75	230	70	55	105	XDRST11-75/50
75×63×75	230	70	63	115	XDRST11-75/63
90×32×90	215	79	44	105	XDRST11-90/32
90×40×90	225	79	49	105	XDRST11-90/40
90×50×90	235	79	55	112	XDRST11-90/50
90×63×90	245	79	63	115	XDRST11-90/63
90×75×90	250	79	70	126	XDRST11-90/75
110×32×110	223	82	44	120	XDRST11-110/32
110×40×110	230	82	49	125	XDRST11-110/40
110×50×110	240	82	55	130	XDRST11-110/50
110×63×110	245	82	63	135	XDRST11-110/63
110×75×110	262	82	70	145	XDRST11-110/75
110×90×110	275	82	79	146	XDRST11-110/90
125×63×125	320	87	63	140	XDRST11-125/63
125×75×125	320	87	70	157	XDRST11-125/75
125×90×125	320	87	79	155	XDRST11-125/90
125×110×125	320	87	82	165	XDRST11-125/110
140×90×140	290	92	79	175	XDRST11-140/90
140×110×140	315	92	82	165	XDRST11-140/110
140×125×140	335	92	87	175	XDRST11-140/125
160×40×160	290	98	55	150	XDRST11-160/40
160×50×160	290	98	55	155	XDRST11-160/50
160×63×160	275	98	63	155	XDRST11-160/63
160×75×160	285	98	70	170	XDRST11-160/75
160×90×160	305	98	79	180	XDRST11-160/90
160×110×160	325	98	82	180	XDRST11-160/110
160×125×160	340	98	87	190	XDRST11-160/125
160×140×160	355	98	92	190	XDRST11-160/140
180×90×180	345	105	79	185	XDRST11-180/90
180×110×180	355	105	82	190	XDRST11-180/110
180×125×180	365	105	87	200	XDRST11-180/125
180×140×180	380	105	92	200	XDRST11-180/140
180×160×180	400	105	98	205	XDRST11-180/160

SDR17					
(Specifications) $\phi dn \times \phi dn_1 \times \phi dn_2$	L	A	B	H	(Item Number)
90×50×90	235	79	55	110	XDRST17-90/50
90×63×90	245	79	63	120	XDRST17-90/63
90×75×90	250	79	70	128	XDRST17-90/75
110×32×110	240	82	44	115	XDRST17-110/32
110×40×110	240	82	50	125	XDRST17-110/40
110×50×110	242	82	55	127	XDRST17-110/50
110×63×110	248	82	63	130	XDRST17-110/63
110×75×110	265	82	70	140	XDRST17-110/75
110×90×110	280	82	79	149	XDRST17-110/90
125×75×125	320	87	70	155	XDRST17-125/75
125×90×125	320	87	79	155	XDRST17-125/90
125×110×125	320	87	82	165	XDRST17-125/110
140×90×140	290	92	79	170	XDRST17-140/90
140×110×140	320	92	82	170	XDRST17-140/110
140×125×140	335	92	87	170	XDRST17-140/125
160×63×160	280	98	63	155	XDRST17-160/63
160×75×160	290	98	70	170	XDRST17-160/75
160×90×160	305	98	79	175	XDRST17-160/90
160×110×160	330	98	82	175	XDRST17-160/110
160×125×160	340	98	87	185	XDRST17-160/125
180×90×180	350	105	79	185	XDRST17-180/90
180×110×180	350	105	82	190	XDRST17-180/110
180×125×180	365	105	87	195	XDRST17-180/125
180×140×180	380	105	92	200	XDRST17-180/140
180×160×180	400	105	98	200	XDRST17-180/160
200×63×200	310	112	63	178	XDRST17-200/63
200×75×200	319	112	70	185	XDRST17-200/75
200×90×200	335	106	75	198	XDRST17-200/90
200×110×200	360	112	82	200	XDRST17-200/110
200×125×200	385	112	87	204	XDRST17-200/125
200×160×200	425	112	98	215	XDRST17-200/160
225×90×225	372	120	79	216	XDRST17-225/90
225×110×225	384	120	82	217	XDRST17-225/110
225×160×225	430	120	98	230	XDRST17-225/160
225×180×225	430	95	85	205	XDRST17-225/180
250×90×250	380	120	79	220	XDRST17-250/90
250×110×250	380	120	82	225	XDRST17-250/110
250×160×250	380	100	98	245	XDRST17-250/160
250×200×250	380	79	112	260	XDRST17-250/200
280×90×280	408	139	79	245	XDRST17-280/90

Butt Fusion Fitting Series



Reducing Tee



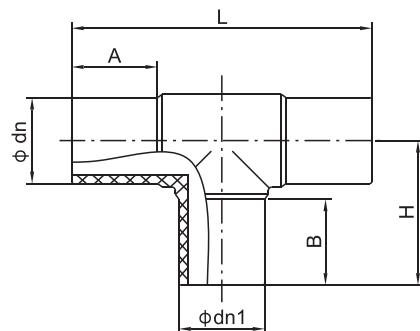
SDR11					
(Specifications) $\phi dn \times \phi dn_1 \times \phi dn$	L	A	B	H	(Item Number)
200×63×200	310	112	63	178	XDRST11-200/63
200×75×200	315	112	70	185	XDRST11-200/75
200×90×200	335	112	79	195	XDRST11-200/90
200×110×200	355	112	82	200	XDRST11-200/110
200×125×200	385	112	87	205	XDRST11-200/125
200×160×200	420	112	98	210	XDRST11-200/160
200×180×200	440	112	105	225	XDRST11-200/180
225×90×225	370	120	79	208	XDRST11-225/90
225×110×225	380	120	82	208	XDRST11-225/110
225×125×225	410	120	87	215	XDRST11-225/125
225×160×225	430	120	98	220	XDRST11-225/160
225×180×225	430	95	85	205	XDRST11-225/180
225×200×225	430	105	100	230	XDRST11-225/200
250×90×250	380	130	79	220	XDRST11-250/90
250×110×250	375	120	82	225	XDRST11-250/110
250×125×250	380	115	87	235	XDRST11-250/125
250×160×250	380	100	98	235	XDRST11-250/160
250×180×250	380	88	105	245	XDRST11-250/180
250×200×250	380	79	112	260	XDRST11-250/200
280×90×280	408	139	79	245	XDRST11-280/90
280×110×280	415	139	82	245	XDRST11-280/110
280×125×280	427	139	87	250	XDRST11-280/125
280×160×280	460	139	98	260	XDRST11-280/160
280×225×280	545	139	120	285	XDRST11-280/225
280×250×280	570	139	130	293	XDRST11-280/250
315×90×315	425	150	79	265	XDRST11-315/90
315×110×315	440	150	82	265	XDRST11-315/110
315×125×315	450	150	87	268	XDRST11-315/125
315×160×315	450	130	75	250	XDRST11-315/160
315×180×315	450	120	100	280	XDRST11-315/180
315×200×315	450	115	100	280	XDRST11-315/200
315×225×315	450	100	100	275	XDRST11-315/225
315×250×315	450	90	75	250	XDRST11-315/250
315×280×315	530	140	110	320	XDRST11-315/280
355×250×355	730	164	129	340	XDRST11-355/250
355×315×355	730	164	140	340	XDRST11-355/315
400×160×400	675	179	98	330	XDRST11-400/160
400×200×400	675	179	112	350	XDRST11-400/200
400×250×400	675	179	129	360	XDRST11-400/250
400×315×400	675	150	150	375	XDRST11-400/315
400×355×400	675	140	150	380	XDRST11-400/355
450×315×450	805	195	150	405	XDRST11-450/315

SDR17					
(Specifications) $\phi dn \times \phi dn_1 \times \phi dn$	L	A	B	H	(Item Number)
280×225×280	545	139	120	285	XDRST17-280/225
280×250×280	570	139	130	293	XDRST17-280/250
315×90×315	425	150	79	260	XDRST17-315/90
315×110×315	440	150	82	260	XDRST17-315/110
315×160×315	450	130	75	250	XDRST17-315/160
315×200×315	450	110	100	275	XDRST17-315/200
315×225×315	455	100	110	285	XDRST17-315/225
315×250×315	455	90	75	250	XDRST17-315/250
315×280×315	575	130	110	280	XDRST17-315/280
355×250×355	630	170	120	320	XDRST17-355/250
355×315×355	635	145	145	340	XDRST17-355/315
400×315×400	680	160	146	375	XDRST17-400/315
400×355×400	680	145	150	375	XDRST17-400/355
450×315×450	805	195	150	405	XDRST17-400/315
450×400×450	805	170	170	410	XDRST17-450/400
500×125×500	860	190	90	370	XDRST17-500/125
500×160×500	860	190	98	378	XDRST17-500/160
500×250×500	860	190	115	400	XDRST17-500/250
500×315×500	860	190	150	425	XDRST17-500/315
500×400×500	860	190	170	430	XDRST17-500/400
560×160×560	910	235	98	455	XDRST17-560/160
560×250×560	910	205	129	465	XDRST17-560/250
560×355×560	910	235	135	455	XDRST17-560/355
560×400×560	910	235	165	500	XDRST17-560/400
630×400×630	995	255	165	530	XDRST17-630/400
630×500×630	990	210	180	510	XDRST17-630/500

SDR11					
(Specifications) $\phi dn \times \phi dn_1 \times \phi dn$	L	A	B	H	(Item Number)
450×400×450	805	170	170	410	XDRST11-450/400
500×125×500	860	190	90	370	XDRST11-500/125
500×160×500	855	190	98	380	XDRST11-500/160
500×250×500	855	190	115	388	XDRST11-500/250
500×315×500	855	190	150	425	XDRST11-500/315
500×400×500	855	190	170	460	XDRST11-500/400
560×160×560	910	235	98	455	XDRST11-560/160
560×250×560	905	235	129	465	XDRST11-560/250
560×355×560	910	235	135	445	XDRST11-560/355
560×400×560	920	235	165	480	XDRST11-560/400
630×400×630	995	255	165	525	XDRST11-630/400
630×500×630	990	210	180	510	XDRST11-630/500



Equal Tee



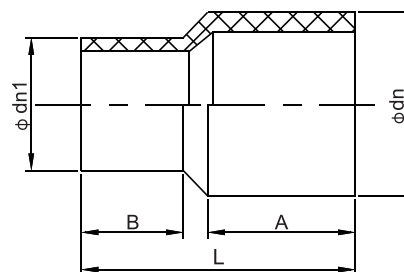
SDR11					
(Specifications) $\phi dn \times \phi dn_1 \times \phi dn$	L	A	B	H	(Item Number)
50×50×50	170	55	55	85	XDRT11-50
63×63×63	205	63	63	104	XDRT11-63
75×75×75	230	70	70	118	XDRT11-75
90×90×90	265	79	79	134	XDRT11-90
110×110×110	290	82	82	145	XDRT11-110
125×125×125	320	87	87	163	XDRT11-125
140×140×140	345	92	92	175	XDRT11-140
160×160×160	325	70	70	169	XDRT11-160
180×180×180	438	105	105	225	XDRT11-180
200×200×200	380	80	90	200	XDRT11-200
225×225×225	430	95	105	230	XDRT11-225
250×250×250	520	120	125	270	XDRT11-250
280×280×280	605	139	139	310	XDRT11-280
315×315×315	619	135	130	300	XDRT11-315
355×355×355	730	164	164	370	XDRT11-355
400×400×400	675	110	165	370	XDRT11-400
450×450×450	805	150	175	430	XDRT11-450
500×500×500	855	150	180	485	XDRT11-500
560×560×560	910	145	180	525	XDRT11-560
630×630×630	990	145	180	550	XDRT11-630

SDR17					
(Specifications) $\phi dn \times \phi dn_1 \times \phi dn$	L	A	B	H	(Item Number)
63×63×63	197	63	63	104	XDRT17-63
75×75×75	230	70	70	114	XDRT17-75
90×90×90	265	79	79	132	XDRT17-90
110×110×110	295	82	82	145	XDRT17-110
125×125×125	320	87	87	163	XDRT17-125
140×140×140	345	92	92	175	XDRT17-140
160×160×160	325	75	75	168	XDRT17-160
180×180×180	438	105	105	225	XDRT17-180
200×200×200	380	80	90	210	XDRT17-200
225×225×225	430	95	105	235	XDRT17-225
250×250×250	520	120	120	265	XDRT17-250
280×280×280	605	139	139	305	XDRT17-280
315×315×315	620	135	130	305	XDRT17-315
355×355×355	640	125	164	380	XDRT17-355
400×400×400	680	120	140	380	XDRT17-400
450×450×450	805	150	175	440	XDRT17-450
500×500×500	855	150	180	485	XDRT17-500
560×560×560	910	145	180	550	XDRT17-560
630×630×630	1000	145	180	550	XDRT17-630

Butt Fusion Fitting Series

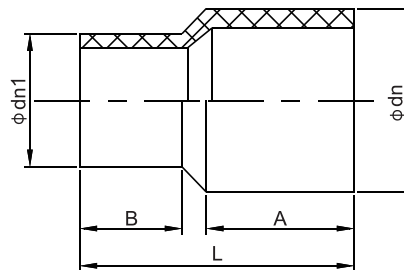


Reducer



SDR11				
(Specifications) $\phi dn \times \phi dn1$	L	A	B	(Item Number)
63×25	150	70	58	XDRS11-63/25
63×32	150	70	58	XDRS11-63/32
63×40	153	70	60	XDRS11-63/40
63×50	160	70	60	XDRS11-63/50
75×32	160	80	60	XDRS11-75/32
75×40	160	73	60	XDRS11-75/40
75×50	160	80	60	XDRS11-75/50
75×63	160	80	63	XDRS11-75/63
90×32	170	80	65	XDRS11-90/32
90×40	170	80	65	XDRS11-90/40
90×50	175	80	70	XDRS11-90/50
90×63	175	80	70	XDRS11-90/63
90×75	175	80	75	XDRS11-90/75
110×40	180	90	58	XDRS11-110/40
110×50	180	90	60	XDRS11-110/50
110×63	185	90	68	XDRS11-110/63
110×75	185	90	70	XDRS11-110/75
110×90	190	90	79	XDRS11-110/90
125×63	193	89	64	XDRS11-125/63
125×75	193	89	80	XDRS11-125/75
125×90	195	90	82	XDRS11-125/90
125×110	189	95	82	XDRS11-125/110
140×90	235	100	81	XDRS11-140/90
140×110	238	100	84	XDRS11-140/110
160×32	215	100	50	XDRS11-160/32
160×50	210	100	70	XDRS11-160/50
160×63	215	100	77	XDRS11-160/63
160×75	212	100	77	XDRS11-160/75
160×90	215	100	82	XDRS11-160/90
160×110	215	100	85	XDRS11-160/110
160×125	217	100	90	XDRS11-160/125
180×90	239	110	80	XDRS11-180/90
180×110	232	110	87	XDRS11-180/110
180×125	243	110	95	XDRS11-180/125
180×160	237	110	100	XDRS11-180/160
200×63	230	112	78	XDRS11-200/63
200×90	232	112	82	XDRS11-200/90

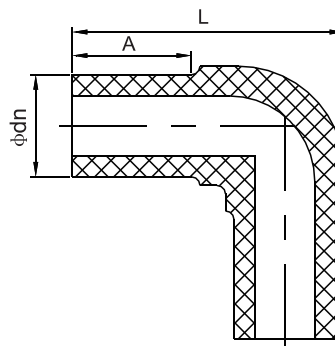
SDR17				
(Specifications) $\phi dn \times \phi dn1$	L	A	B	(Item Number)
90×50	172	79	60	XDRS17-90/50
90×63	170	80	63	XDRS17-90/63
90×75	170	80	70	XDRS17-90/75
110×50	179	90	60	XDRS17-110/50
110×63	180	90	63	XDRS17-110/63
110×75	185	90	70	XDRS17-110/75
110×90	190	90	79	XDRS17-110/90
125×90	192	87	82	XDRS17-125/90
125×110	186	87	82	XDRS17-125/110
140×110	239	107	87	XDRS17-140/110
160×63	210	100	63	XDRS17-160/63
160×75	210	100	70	XDRS17-160/75
160×90	215	100	80	XDRS17-160/90
160×110	215	100	83	XDRS17-160/110
160×125	215	100	87	XDRS17-160/125
180×90	235	112	80	XDRS17-180/90
180×110	230	110	83	XDRS17-180/110
180×125	230	112	79	XDRS17-180/125
180×160	240	112	105	XDRS17-180/160
200×90	227	108	80	XDRS17-200/90
200×110	230	110	83	XDRS17-200/110
200×160	239	112	100	XDRS17-200/160
200×180	245	120	104	XDRS17-200/180
225×110	245	110	80	XDRS17-225/110
225×160	250	110	90	XDRS17-225/160
225×180	250	115	86	XDRS17-225/180
225×200	258	125	94	XDRS17-225/200
250×90	240	112	89	XDRS17-250/90
250×110	240	112	89	XDRS17-250/110
250×125	242	112	95	XDRS17-250/125
250×160	248	112	100	XDRS17-250/160
250×180	250	112	100	XDRS17-250/180
250×200	250	112	100	XDRS17-250/200
250×225	280	135	115	XDRS17-250/225
280×160	250	110	85	XDRS17-280/160
280×225	250	110	90	XDRS17-280/225
315×90	255	118	90	XDRS17-315/90



Reducer

SDR11				
(Specifications) $\phi dn \times \phi dn1$	L	A	B	(Item Number)
200×110	232	112	85	XDRS11-200/110
200×125	232	112	89	XDRS11-200/125
200×160	246	112	105	XDRS11-200/160
200×180	241	112	105	XDRS11-200/180
225×90	233	112	80	XDRS11-225/90
225×110	245	110	82	XDRS11-225/110
225×125	258	110	90	XDRS11-225/125
225×160	258	110	85	XDRS11-225/160
225×180	249	110	85	XDRS11-225/180
225×200	249	115	85	XDRS11-225/200
250×90	235	110	90	XDRS11-250/90
250×110	242	110	90	XDRS11-250/110
250×125	242	110	98	XDRS11-250/125
250×160	242	110	100	XDRS11-250/160
250×180	245	110	100	XDRS11-250/180
250×200	250	110	105	XDRS11-250/200
250×225	280	130	120	XDRS11-250/225
280×160	250	109	90	XDRS11-280/160
280×180	255	110	90	XDRS11-280/180
280×200	255	110	90	XDRS11-280/200
280×225	255	110	94	XDRS11-280/225
280×250	255	114	89	XDRS11-280/250
315×90	255	118	95	XDRS11-315/90
315×110	255	118	95	XDRS11-315/110
315×160	255	118	95	XDRS11-315/160
315×180	260	118	104	XDRS11-315/180
315×200	255	119	95	XDRS11-315/200
315×225	255	119	95	XDRS11-315/225
315×250	255	119	100	XDRS11-315/250
315×280	255	124	105	XDRS11-315/280
355×200	305	120	115	XDRS11-355/200
355×250	278	120	115	XDRS11-355/250
355×280	295	120	115	XDRS11-355/280
355×315	290	130	115	XDRS11-355/315
400×200	305	120	115	XDRS11-400/200
400×250	300	120	115	XDRS11-400/250
400×315	300	130	120	XDRS11-400/315
400×355	295	130	120	XDRS11-400/355

SDR17				
(Specifications) $\phi dn \times \phi dn1$	L	A	B	(Item Number)
315×110	255	118	87	XDRS17-315/110
315×160	255	118	92	XDRS17-315/160
315×180	255	118	90	XDRS17-315/180
315×200	255	118	94	XDRS17-315/200
315×225	255	120	95	XDRS17-315/225
315×250	255	120	100	XDRS17-315/250
355×200	305	115	115	XDRS17-355/200
355×250	290	115	115	XDRS17-355/250
355×280	290	115	115	XDRS17-355/280
355×315	290	130	115	XDRS17-355/315
400×200	298	120	110	XDRS17-400/200
400×225	285	120	110	XDRS17-400/225
400×250	292	120	110	XDRS17-400/250
400×280	285	120	110	XDRS17-400/280
400×315	285	120	110	XDRS17-400/315
400×355	285	120	110	XDRS17-400/355
450×200	300	120	110	XDRS17-450/200
450×250	290	120	110	XDRS17-450/250
450×315	290	120	110	XDRS17-450/315
450×355	290	120	110	XDRS17-450/355
450×400	280	120	110	XDRS17-450/400
500×400	260	100	100	XDRS17-500/400
500×450	290	120	110	XDRS17-500/450
560×500	275	120	100	XDRS17-560/500
630×500	250	100	100	XDRS17-630/500
710×630	250	100	100	XDRS17-710/630
800×710	260	110	100	XDRS17-800/710



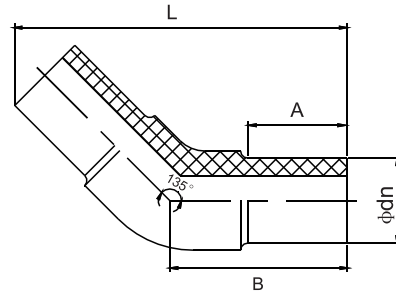
Elbow 90°

SDR11			
(Specifications) ϕ dn	L	A	(Item Number)
50	119	66	XDRL11-50
63	132	63	XDRL11-63
75	165	70	XDRL11-75
90	182	79	XDRL11-90
110	214	82	XDRL11-110
125	242	87	XDRL11-125
140	242	92	XDRL11-140
160	260	85	XDRL11-160
180	295	105	XDRL11-180
200	310	96	XDRL11-200
225	365	120	XDRL11-225
250	364	100	XDRL11-250
280	423	135	XDRL11-280
315	460	130	XDRL11-315
355	530	155	XDRL11-355
400	610	170	XDRL11-400
450	655	160	XDRL11-450
500	704	160	XDRL11-500
560	784	160	XDRL11-560
630	860	170	XDRL11-630

SDR17			
(Specifications) ϕ dn	L	A	(Item Number)
63	132	63	XDRL17-63
75	165	70	XDRL17-75
90	190	79	XDRL17-90
110	214	82	XDRL17-110
125	242	87	XDRL17-125
140	242	92	XDRL17-140
160	260	88	XDRL17-160
180	295	105	XDRL17-180
200	315	96	XDRL17-200
225	365	120	XDRL17-225
250	370	100	XDRL17-250
280	430	135	XDRL17-280
315	460	136	XDRL17-315
355	550	160	XDRL17-355
400	620	180	XDRL17-400
450	655	160	XDRL17-450
500	704	160	XDRL17-500
560	784	160	XDRL17-560
630	860	170	XDRL17-630



Elbow 45°



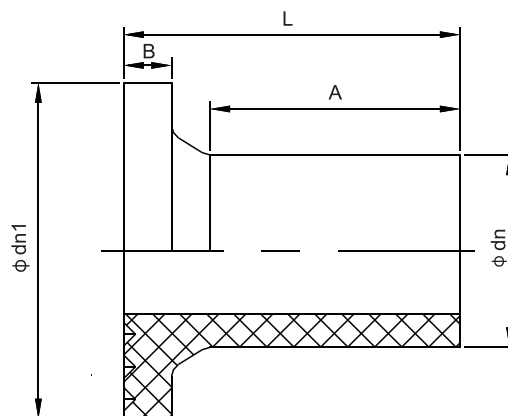
SDR11				
(Specifications) φ dn	L	A	B	(Item Number)
63	160	63	80	XDRV11-63
75	180	70	89	XDRV11-75
90	227	79	112	XDRV11-90
110	245	82	118	XDRV11-110
125	245	87	118	XDRV11-125
160	302	98	140	XDRV11-160
180	335	105	155	XDRV11-180
200	355	112	168	XDRV11-200
225	395	120	170	XDRV11-225
250	405	129	189	XDRV11-250
280	465	140	215	XDRV11-280
315	490	150	220	XDRV11-315
355	530	145	240	XDRV11-355
400	610	160	270	XDRV11-400
450	660	170	285	XDRV11-450
500	735	170	315	XDRV11-500
560	760	170	325	XDRV11-560
630	820	170	330	XDRV11-630

SDR17				
(Specifications) φ dn	L	A	B	(Item Number)
63	160	63	80	XDRV17-63
75	180	70	89	XDRV17-75
90	227	79	112	XDRV17-90
110	245	82	118	XDRV17-110
125	244	87	115	XDRV17-125
160	302	98	140	XDRV17-160
180	335	105	155	XDRV17-180
200	355	112	168	XDRV17-200
225	395	120	170	XDRV17-225
250	420	129	189	XDRV17-250
280	465	140	215	XDRV17-280
315	490	150	210	XDRV17-315
355	530	145	240	XDRV17-355
400	620	160	270	XDRV17-400
450	670	170	295	XDRV17-450
500	740	170	320	XDRV17-500
560	760	170	325	XDRV17-560
630	820	170	330	XDRV17-630

Butt Fusion Fitting Series

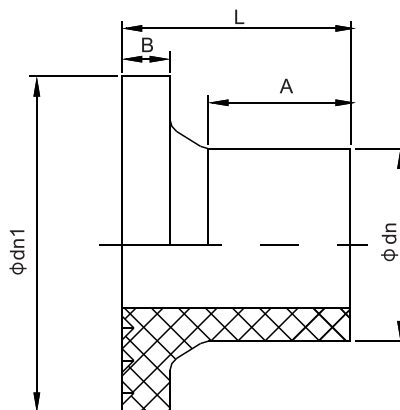
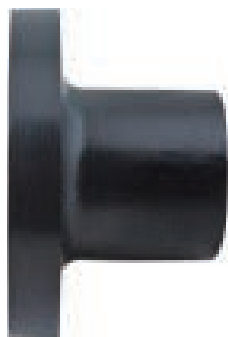


Flange adaptor (Stub End)



SDR11					
(Specifications) ϕdn	ϕdn_1	L	A	B	(Item Number)
20	45	83	61	7	XDRD11-20
25	58	83	61	8	XDRD11-25
32	68	83	61	10	XDRD11-32
40	78	80	61	12	XDRD11-40
50	88	85	67	12	XDRD11-50
63	102	85	68	13	XDRD11-63
75	122	94	75	14	XDRD11-75
90	138	98	77	17	XDRD11-90
110	158	105	82	19	XDRD11-110
125	158	128	100	21	XDRD11-125
140	188	130	100	22	XDRD11-140
160	212	135	100	26	XDRD11-160
180	212	135	100	30	XDRD11-180
200	268	155	112	34	XDRD11-200
225	268	145	105	30	XDRD11-225
250	320	160	120	32	XDRD11-250
280	320	150	105	35	XDRD11-280
315	370	175	130	35	XDRD11-315
355	430	180	130	35	XDRD11-355
400	482	180	130	37	XDRD11-400
450/A	585	215	155	45	XDRD11-450A
450/B	530	215	155	45	XDRD11-450B
500	585	215	155	45	XDRD11-500
560/A	685	225	165	45	XDRD11-560A
560/B	630	225	165	45	XDRD11-560B
630	685	210	145	52	XDRD11-630

SDR17					
(Specifications) ϕdn	ϕdn_1	L	A	B	(Item Number)
50	88	85	67	13	XDRD17-50
63	102	88	68	13	XDRD17-63
75	122	95	75	14	XDRD17-75
90	138	98	73	17	XDRD17-90
110	158	105	85	19	XDRD17-110
125	158	127	102	21	XDRD17-125
140	188	130	100	22	XDRD17-140
160	212	135	100	26	XDRD17-160
180	212	135	100	30	XDRD17-180
200	268	155	112	34	XDRD17-200
225	268	145	105	30	XDRD17-225
250	320	160	118	32	XDRD17-250
280	320	150	105	35	XDRD17-280
315	370	165	125	35	XDRD17-315
355	430	180	130	35	XDRD17-355
400	482	182	133	37	XDRD17-400
450A	585	205	155	44	XDRD17-450A
450B	530	205	155	44	XDRD17-450B
500	585	215	155	45	XDRD17-500
560A	685	225	165	45	XDRD17-560A
560B	630	225	165	45	XDRD17-560B
630A	685	210	145	52	XDRD17-630A
630B	720	220	160	52	XDRD17-630B
710	800	200	120	60	XDRD17-710
800	905	190	100	60	XDRD17-800
900	1005	200	125	56	XDRD17-900
1000	1110	190	105	60	XDRD17-1000
1200	1330	335	215	70	XDRD17-1200



Flange adaptor (Short neck)

SDR11					
(Specifications) ϕ dn	ϕ dn1	L	A	B	(Item Number)
63	102	50	20	13	XDRD11-63S
75 *	122	58	14	14	XDRD11-75S
90	138	80	35	17	XDRD11-90S
110	158	80	35	18	XDRD11-110S
125 *	158	80	35	25	XDRD11-125S
140 *	188	85	30	22	XDRD11-140S
160	212	80	26	26	XDRD11-160S
180 *	212	80	30	30	XDRD11-180S
200	268	100	30	32	XDRD11-200S
225 *	268	100	40	30	XDRD11-225S
250	320	100	28	32	XDRD11-250S
280 *	320	100	35	32	XDRD11-280S
315	370	100	40	35	XDRD11-315S

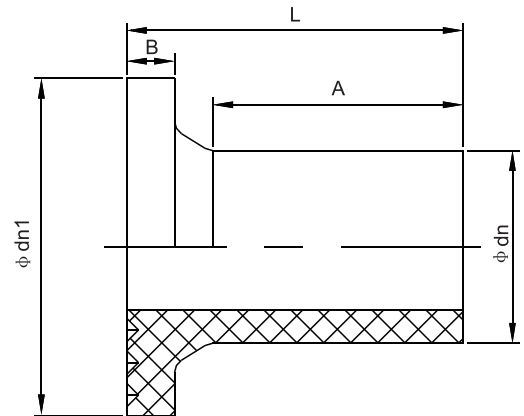
*

SDR17					
(Specifications) ϕ dn	ϕ dn1	L	A	B	(Item Number)
63	102	50	20	13	XDRD17-63S
75 *	122	58	14	14	XDRD17-75S
90	138	80	35	17	XDRD17-90S
110	158	80	35	18	XDRD17-110S
125 *	158	80	35	25	XDRD17-125S
140 *	188	85	30	22	XDRD17-140S
160	212	80	26	26	XDRD17-160S
180 *	212	80	30	30	XDRD17-180S
200	268	100	30	32	XDRD17-200S
225 *	268	100	40	30	XDRD17-225S
250	320	100	28	32	XDRD17-250S
280 *	320	100	35	32	XDRD17-280S
315	370	100	40	35	XDRD17-315S

Butt Fusion Fitting Series



Flange adaptor(Long neck)



SDR11					
(Specifications) ϕdn	$\phi dn1$	L	A	B	(Item Number)
63	102	115	82	13	XDRD11-63L
75 *	122	115	79	16	XDRD11-75L
90	138	135	88	17	XDRD11-90L
110	158	135	82	18	XDRD11-110L
125 *	158	175	133	21	XDRD11-125L
140 *	188	175	125	22	XDRD11-140L
160	212	175	120	26	XDRD11-160L
180 *	212	190	140	26	XDRD11-180L
200	268	175	102	33	XDRD11-200L
225 *	268	175	115	30	XDRD11-225L
250	320	175	100	32	XDRD11-250L
280 *	320	175	110	35	XDRD11-280L
315	370	265	205	35	XDRD11-315L

SDR17					
(Specifications) ϕdn	$\phi dn1$	L	A	B	(Item Number)
63	102	115	81	13	XDRD17-63L
90	138	135	88	17	XDRD17-90L
110	158	135	82	18	XDRD17-110L
125 *	158	180	140	21	XDRD17-125L
160	212	175	125	26	XDRD17-160L
200	268	175	102	33	XDRD17-200L
225 *	268	175	115	30	XDRD17-225L
250	320	175	100	32	XDRD17-250L
315	370	235	175	35	XDRD17-315L



Equal coupling

(Specifications)	(Item Number)
20	XDCI-20
25	XDCI-25
32	XDCI-32
40	XDCI-40
50	XDCI-50
63	XDCI-63
75	XDCI-75



Reducing coupling

(Specifications)	(Item Number)	(Specifications)	(Item Number)
25 × 20	XDCS-25/20	63 × 20	XDCS-63/20
32 × 20	XDCS-32/20	63 × 25	XDCS-63/25
32 × 25	XDCS-32/25	63 × 32	XDCS-63/32
40 × 20	XDCS-40/20	63 × 40	XDCS-63/40
40 × 25	XDCS-40/25	63 × 50	XDCS-63/50
40 × 32	XDCS-40/32	75 × 32	XDCS-75/32
50 × 20	XDCS-50/20	75 × 40	XDCS-75/40
50 × 25	XDCS-50/25	75 × 50	XDCS-75/50
50 × 32	XDCS-50/32	75 × 63	XDCS-75/63
50 × 40	XDCS-50/40		



90° Equal Elbow

(Specifications)	(Item Number)
20	XDCL-20
25	XDCL-25
32	XDCL-32
40	XDCL-40
50	XDCL-50
63	XDCL-63
75	XDCL-75



45° Equal Elbow

(Specifications)	(Item Number)
20	XDCVL-20
25	XDCVL-25
32	XDCVL-32
40	XDCVL-40
50	XDCVL-50
63	XDCVL-63
75	XDCVL-75



Equal Tee

(Specifications)	(Item Number)
20	XDCT-20
25	XDCT-25
32	XDCT-32
40	XDCT-40
50	XDCT-50
63	XDCT-63
75	XDCT-75



Reducing Tee

(Specifications)	(Item Number)	(Specifications)	(Item Number)
25 × 20	XDCST-25/20	50 × 40	XDCST-50/40
32 × 20	XDCST-32/20	63 × 20	XDCST-63/20
32 × 25	XDCST-32/25	63 × 25	XDCST-63/25
40 × 20	XDCST-40/20	63 × 32	XDCST-63/32
40 × 25	XDCST-40/25	63 × 40	XDCST-63/40
40 × 32	XDCST-40/32	63 × 50	XDCST-63/50
50 × 20	XDCST-50/20	75 × 40	XDCST-75/40
50 × 25	XDCST-50/25	75 × 50	XDCST-75/50
50 × 32	XDCST-50/32	75 × 63	XDCST-75/63



Socket washer

(Specifications)	(Item Number)
40	XDCD-40
50	XDCD-50
63	XDCD-63
75	XDCD-75



End Cap

(Specifications)	(Item Number)
20	XDCM-20
25	XDCM-25
32	XDCM-32
40	XDCM-40
50	XDCM-50
63	XDCM-63
75	XDCM-75



Female adapter

(Specifications)	(Item Number)
20 × 1/2" F	XDCFI-20/1/2 _z
25 × 1/2" F	XDCFI-25/1/2 _z
25 × 3/4" F	XDCFI-25/3/4 _z
32 × 1" F	XDCFI-32/1 _z
32 × 1/2" F	XDCFI-32/1/2 _z
32 × 3/4" F	XDCFI-32/3/4 _z
40 × 1 1/4" F	XDCFI-40/1 1/4 _z
50 × 1 1/2" F	XDCFI-50/1 1/2 _z
63 × 2" F	XDCFI-63/2 _z

Socket Joint Series



Male adapter

(Specifications)	(Item Number)
20 × 1/2" M	XDCMI-20/1/2 _s
25 × 1/2" M	XDCMI-25/1/2 _s
25 × 3/4" M	XDCMI-25/3/4 _s
32 × 1" M	XDCMI-32/1 _s
32 × 1/2" M	XDCMI-32/1/2 _s
32 × 3/4" M	XDCMI-32/3/4 _s
40 × 1 1/4" M	XDCMI-40/1 1/4 _s
50 × 1 1/2" M	XDCMI-50/1 1/2 _s
63 × 2" M	XDCMI-63/2 _s



Female Elbow

(Specifications)	(Item Number)
20 × 1/2 _s F	XDCFL-20/1/2 _s
25 × 1/2 _s F	XDCFL-25/1/2 _s
25 × 3/4 _s F	XDCFL-25/3/4 _s
32 × 1 _s F	XDCFL-32/1 _s
32 × 1/2 _s F	XDCFL-32/1/2 _s
32 × 3/4" F	XDCFL-32/3/4 _s



Male Elbow

(Specifications)	(Item Number)
20 × 1/2" M	XDCML-20/1/2 _s
25 × 1/2 _s M	XDCML-25/1/2 _s
25 × 3/4 _s M	XDCML-25/3/4 _s
32 × 1 _s M	XDCML-32/1 _s
32 × 1/2 _s M	XDCML-32/1/2 _s
32 × 3/4 _s M	XDCML-32/3/4 _s



Female Tee

(Specifications)	(Item Number)
20 × 1/2 _s F	XDCFT-20/1/2 _s
25 × 1/2 _s F	XDCFT-25/1/2 _s
25 × 3/4 _s F	XDCFT-25/3/4 _s
32 × 1 _s F	XDCFT-32/1 _s
32 × 1/2 _s F	XDCFT-32/1/2 _s
32 × 3/4 _s F	XDCFT-32/3/4 _s



Male Tee

(Specifications)	(Item Number)
20 × 1/2" M	XDCMT-20/1/2"
25 × 1/2" M	XDCMT-25/1/2"
25 × 3/4" M	XDCMT-25/3/4"
32 × 1" M	XDCMT-32/1"
32 × 1/2" M	XDCMT-32/1/2"
32 × 3/4" M	XDCMT-32/3/4"



Female Union

(Specifications)	(Item Number)
20 × 1/2" F	XDCFH-20/1/2"
25 × 3/4" F	XDCFH-25/3/4"
32 × 1" F	XDCFH-32/1"
40 × 1 1/4" F	XDCFH-40/1 1/4"
50 × 1 1/2" F	XDCFH-50/1 1/2"
63 × 2" F	XDCFH-63/2"



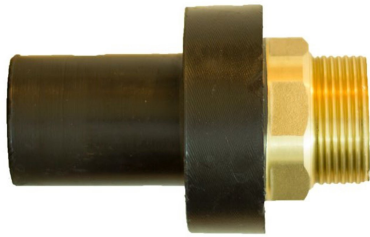
Male Union

(Specifications)	(Item Number)
20 × 1/2" M	XDCMH-20/1/2"
25 × 3/4" M	XDCMH-25/3/4"
32 × 1" M	XDCMH-32/1"
40 × 1 1/4" M	XDCMH-40/1 1/4"
50 × 1 1/2" M	XDCMH-50/1 1/2"
63 × 2" M	XDCMH-63/2"



Stop Valve

(Specifications)	(Item Number)
20	XDCJ-20
25	XDCJ-25
32	XDCJ-32
40	XDCJ-40
50	XDCJ-50
63	XDCJ-63
75	XDCJ-75



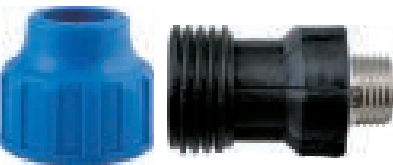
Butt Fusion Male Adapter

(Specifications)	(Item Number)
20 × 1/2" M	XDRML-20/1/2"
25 × 3/4" M	XDRML-25/3/4"
32 × 1" M	XDRML-32/1"
40 × 1 1/4" M	XDRML-40/1 1/4"
50 × 1 1/2" M	XDRML-50/1 1/2"
63 × 2" M	XDRML-63/2"
75 × 2 1/2" M	XDRML-75/2 1/2"
90 × 3" M	XDRML-90/3"



Butt Fusion Female Adapter

(Specifications)	(Item Number)
20 × 1/2" F	XDRFL-20/1/2"
25 × 3/4" F	XDRFL-25/3/4"
32 × 1" F	XDRFL-32/1"
40 × 1 1/4" F	XDRFL-40/1 1/4"
50 × 1 1/2" F	XDRFL-50/1 1/2"
63 × 2" F	XDRFL-63/2"
75 × 2 1/2" F	XDRFL-75/2 1/2"
90 × 3" F	XDRFL-90/3"



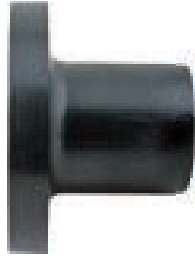
Compression Coupling

(Specifications)	(Item Number)
20 × 1/2" M	XDKSMI-20/1/2"
25 × 3/4" M	XDKSMI-25/3/4"
32 × 1" M	XDKSMI-32/1"



Compression Elbow

(Specifications)	(Item Number)
20 × 1/2" M	XDKSML-20/1/2"
25 × 3/4" M	XDKSML-25/3/4"
32 × 1" M	XDKSML-32/1"



Asm Flang Adapter

(Specifications)	(Item Number)
2 "	XDAMF-2 "
3 "	XDAMF-3 "
4 "	XDAMF-4 "
6 "	XDAMF-6 "
8 "	XDAMF-8 "
10 "	XDAMF-10 "
12 "	XDAMF-12 "
14 "	XDAMF-14 "
16 "	XDAMF-16 "
18 "	XDAMF-18 "
20 "	XDAMF-20 "
24 "	XDAMF-24 "



Electrofusion Syphon Coupler

(Specifications)	(Item Number)
50	XDHI-50
56	XDHI-56
110	XDHI-110
125	XDHI-125
160	XDHI-160
200	XDHI-200
250	XDHI-250
315	XDHI-315



Butt Fusion Stepped Reducer

(Specifications)	(Item Number)
180/160/125/110/90	XDDJR180/90
315/250/200/180/160	XDDJR315/160
400/355/315/250/200/180	XDDJR400/180



The Cutter For Branch Saddle



Electrofusion Machine



Butt Fusion Machine



Socket Welder



Rotating Cutter



Pipe Cutter



Pipe Scraper

DIFFUSE